





LYNXTECHNOLOGIES NOTES 2

DESIGN & TECHNOLOGY 3

CUSTOMIZED DESIGN AND REALIZATION 5

ENERGY SAVING 6

STANDARDS AND CERTIFICATIONS 7

POOLS AND SPA 8

RESTAURANTS 10

CUSTOMIZED REALIZATIONS 11

SPECIAL WINDOWS 14

AERIAL VIEWS 16





Lynxtechnologies designs, manufactures and installs directly mobile and telescopic covers for swimming pools, winter gardens, verandas and large textile covers specific for the hotel and catering sectors.

The company was founded and developed with the intention of renewing the market for mobile roofing by adopting innovative solutions aimed at functionality, energy saving of mobile enclosures and, last but not least, attractive and modern design.

The continuous research and the efforts made to achieve our main objective have allowed us to redefine the quality standard of the sector, becoming a point of reference and support for professionals engaged in high-level planning or retraining.

The differentiated and targeted proposal allows us to provide technologically advanced, high quality and functional products over time.

We manufacture and install mainly tailor-made products, designed and manufactured to meet the needs of a high-level customers, both in the high-end private market and for large commercial plants.

We have developed and adopted cutting-edge technologies that allow us to realize all types of mobile and telescopic roofing by implementing different structural materials such as extruded aluminum, both cold and thermal break, laminated wood, carbon and glass fiber composites.

Particular attention is dedicated to the study and manufacture of mobile covers for the Ho.re.ca sector. The creation of outdoor dining rooms that can be opened for catering, requires a different approach that allows the creation of isolated and comfortable environments to the benefit of the user's well-being.

All phases, from manufacturing to installation of our products, are performed in full compliance with the most up-to-date and appropriate international technical standards.



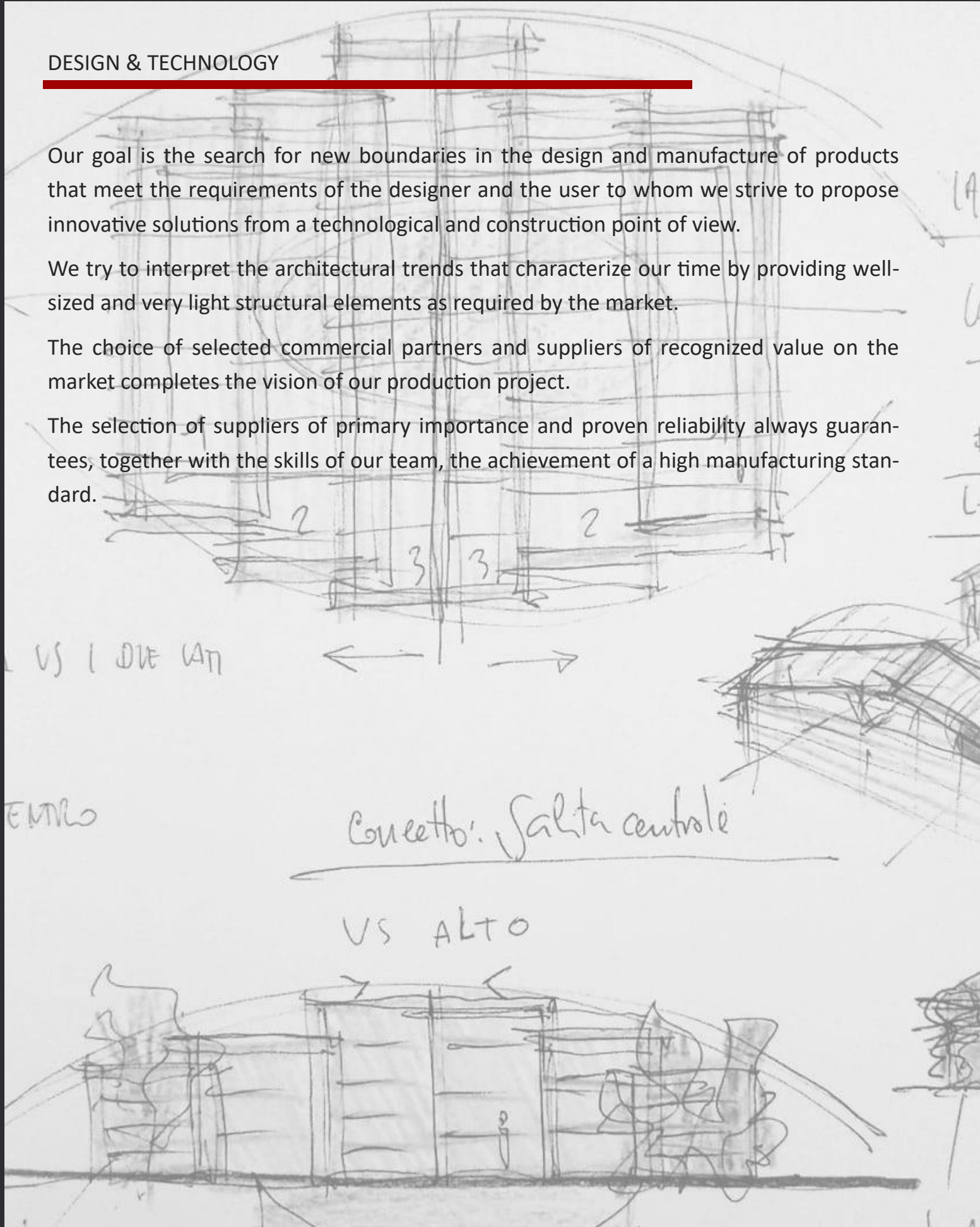
DESIGN & TECHNOLOGY

Our goal is the search for new boundaries in the design and manufacture of products that meet the requirements of the designer and the user to whom we strive to propose innovative solutions from a technological and construction point of view.

We try to interpret the architectural trends that characterize our time by providing well-sized and very light structural elements as required by the market.

The choice of selected commercial partners and suppliers of recognized value on the market completes the vision of our production project.

The selection of suppliers of primary importance and proven reliability always guarantees, together with the skills of our team, the achievement of a high manufacturing standard.



DESIGN & TECHNOLOGY— AUTOMATION AND LIGHTING

Automation is the fundamental aspect of a mobile cover. All elements must be correctly sized, of high quality, resistant to corrosion and reliable over time.

In the case of self-supporting roofs, the automation must not be invasive to allow the area in front of the pool to be used.

We offer different solutions with guides, stainless steel wheels and automatic systems on board.

The movement and control system is based on Siemens inverter servo drives controlled by control units with microprocessor that can be interfaced with any home automation system, and is used both for the roof and for the up and down windows.

The lighting, realized with RGB LED also integrated in the mobile covering structures, is managed remotely with any interface system such as, for example, the Dali.

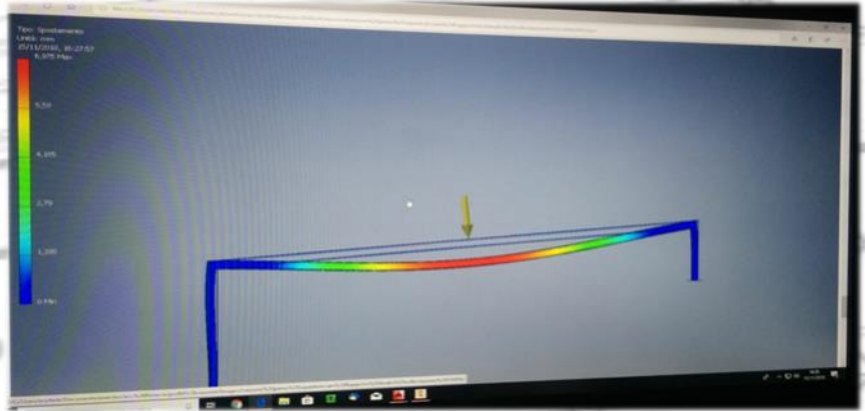


AUTOMATION AND LIGHTING

SIEMENS

CUSTOMIZED DESIGN AND REALIZATION

We support the designer in the analytical and implementation phase of each application including the inclusion of a mobile or fixed cover. Projects and render fast to facilitate the insertion of our products in any desired context without setting errors.



Each structural element is subjected to verification of the finished elements both in the preliminary and in the executive phase, by means of dedicated dedicated



We make every section necessary to meet the designer's architectural and design needs. All materials can be shaped as desired.

ENERGY SAVING

All our products are designed and manufactured using every possible solution to ensure maximum performance of the building from an energy saving point of view.

The choice of coatings, either transparent or blind, is always carried out according to the place of installation of the product and the type of use expected for the enclosure. To this end, while for the coverage of a swimming pool, the installation of claddings that maximize the greenhouse effect will be preferred, in the case of a restaurant, we will try to install materials, always transparent but with high solar factor control for minimize the induced heat.

On a structural level, wood behaves as an excellent insulator in every sense; structures made of extruded aluminum profiles require an insulation process to guarantee acceptable performance.

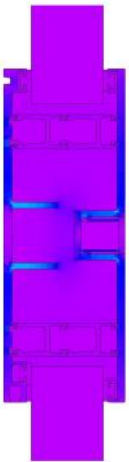
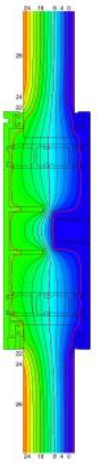
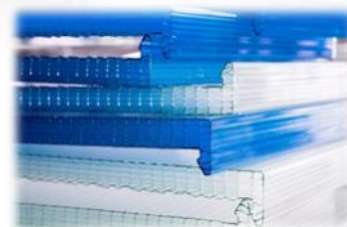
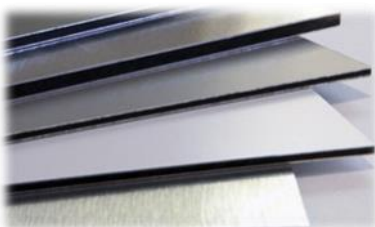
Lyntechnologies, uses patented structural profiles in extruded aluminum, with high insulation where it is not possible to directly cut the thermal structures themselves.

The extruded aluminum profiles used are tested and certified according to the following standards:

EN 12567-1 and **EN 12412-2** Thermal transmittance test on frames and profiles with hot-box method, hot-box

EN 10077-1 and **EN 10077-2** Thermal transmittance test on frames and profiles with numerical method

The covers, whether they are movable or stationary, are normally tested and verified with thermographic tests in order to determine any possible design improvement or any installation imperfections that may cause undesired and unscheduled thermal bridges.



Mobile roofing is not regulated directly in Italy, as in most European and non-European countries. The few existing standards, for example the French NF P90-309, do not meet the minimum quality standard defined by Lynxtechnologies.

In order to produce products that comply with all the regulations that may be related to the type of our products, we have decided to adopt all the requirements defined by the following standards:

D. M. Infrastrutture Trasporti 17 gennaio 2018 (G.U. 20 febbraio 2018 n. 42 - Suppl. Ord. N. 8)
"Technical standards for buildings" - Italian standard

EUROCODE 5 (EN 1995) Design and calculation of laminated wood structures

EUROCODE 9 (EN 1999-1-1) Design and calculation of aluminum alloy structures

EUROCODE 3 (EN 1993) Design of steel structures

EN 14080 (wood structures - glued laminated timber - requirements and related CE conformity certification). Glulam timber must have a durability class 3-4 according to EN350-2

New Machinery Directive D. Lgs 17/2010 " Implementation of Machinery Directive 2006/42/CE"

New fire prevention regulation D.P.R. 1/08/2011 n.151—italian standard

UNI 7697 "Criteri di sicurezza nelle applicazioni vetrarie"

Ex-law 10/91 Energy saving and amendments d.lgs 192 of 2005 and legislative decree 311 of 2007

EN 1090-1: 2009 + A1: 2011 Execution of steel and aluminum structures - Structural components

CEI EN 62305-1 / 4 "Protection against lightning" - February 2013

CEI 81-29 "Guidelines for the application of CEI EN 62305 standards" - February 2014

CEI 81-30 "Lightning protection Lightning localization networks (LLS) Guidelines for the use of LLS systems for the identification of Ng values (CEI EN 62305-2 Standard)" February 2014

EN 13561: 2004 Curtains and darkening systems

ISO 9001: 2015 Quality management system

The European regulatory framework provides for the CE marking in order to guarantee the free circulation of construction products in the Union. The CE marking is a harmonized methodology for assessing, testing, calculating, expressing, guaranteeing and finally declaring the performance of a construction product. Lynxtechnologies is certified in accordance with the law.



POOLS AND SPA



- 1.SPORTING PALLADIO SPA
- 2.PUBLIC POOL TREVIGLIO
- 3.MONTECARLO FITNESS
- 4.SPORTING PALLADIO SPA
- 5.NEMEA VILLAGE
- 6.PALAZZO DI VARIGNANA SPA



POOLS AND SPA



RESTAURANTS



- 1. HOTEL SPLENDID
- 2-3. PALACE HOTEL
- 4. CONTRADA
- 5. BAR

CUSTOMIZED REALIZATIONS



1



3

1-4
HOTEL AMBASSADOR
BIBIONE (VE)

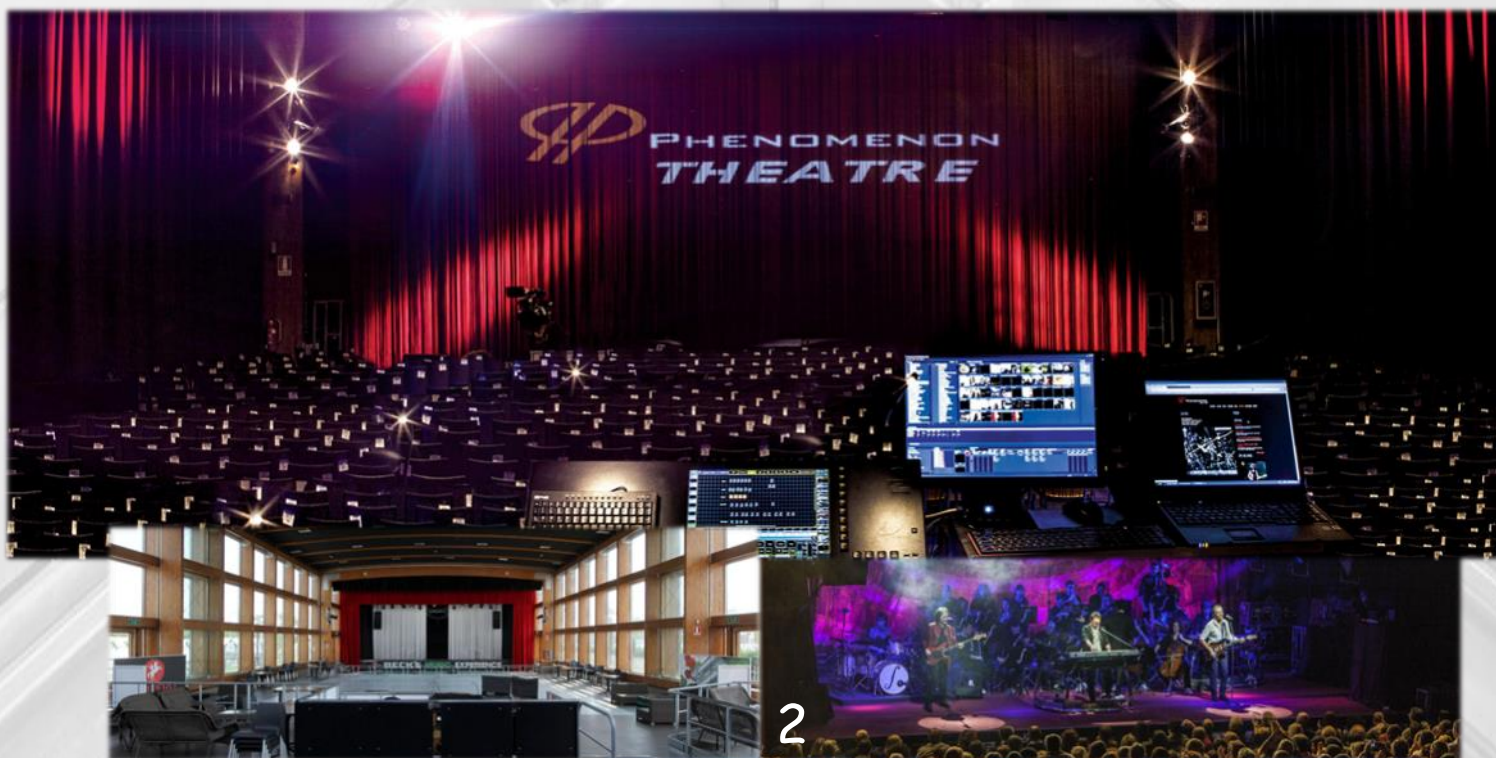


2



4

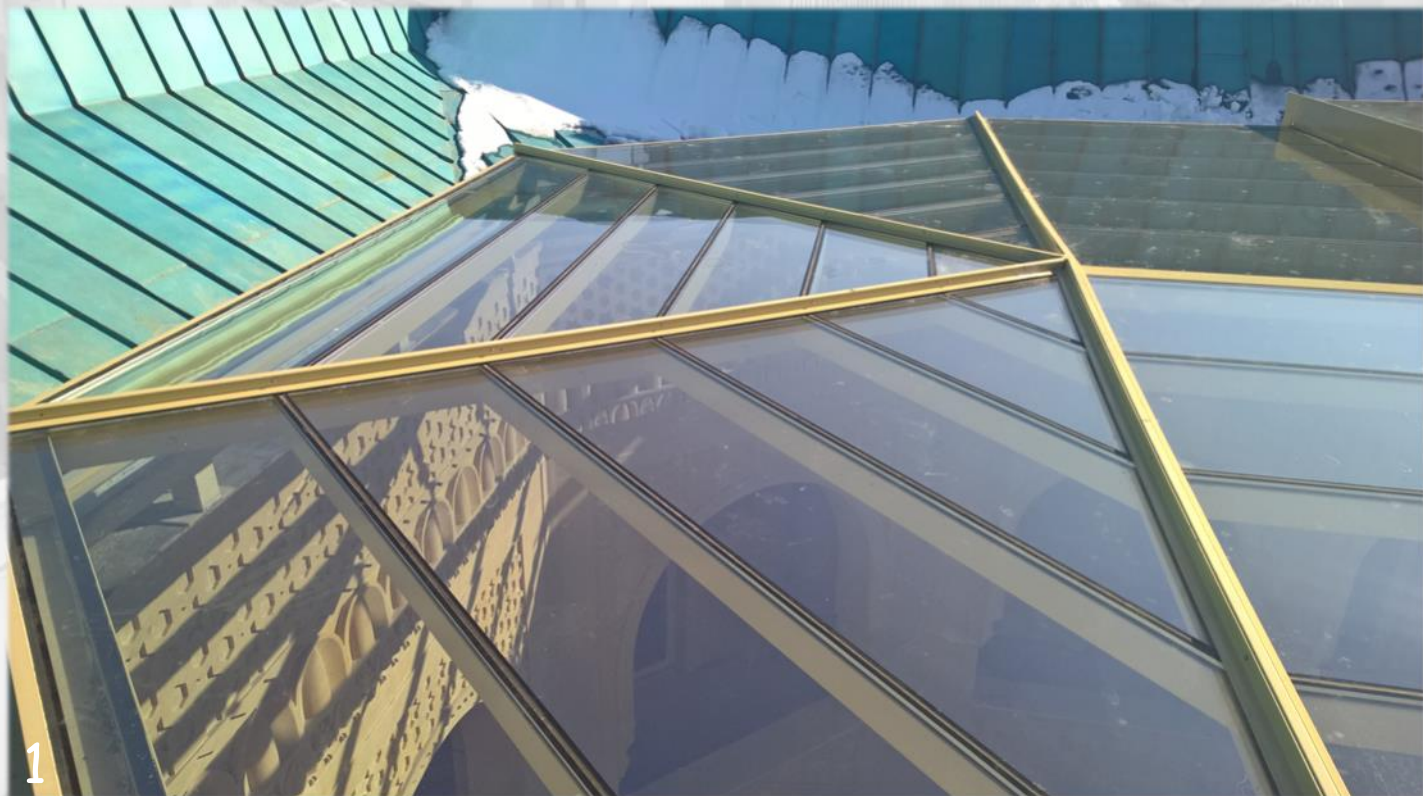
CUSTOMIZED REALIZATIONS



- 1. POLO ARENA BAKU AZERBAIJAN
- 2. OPENABLE THETER PHENOMENON



CUSTOMIZED REALIZATIONS



1-5. LUXURY PRIVATE VILLA — AZERBAIJAN

SPECIAL WINDOWS



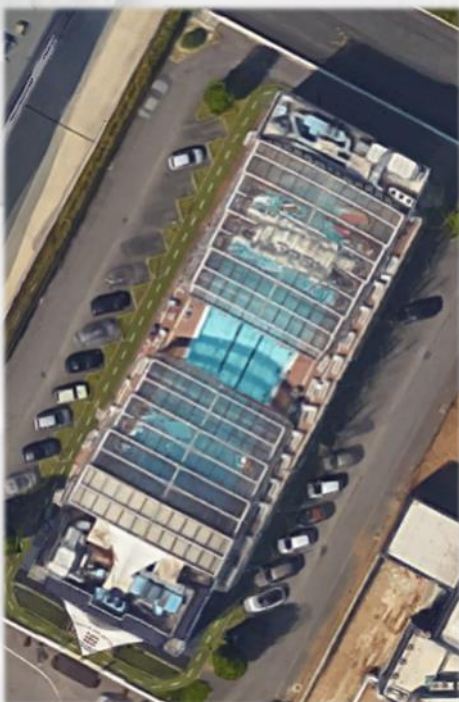
SPECIAL WINDOWS

1. UP AND DOWN 14m

2. UP AND DOWN 21m



AERIAL VIEWS



AERIAL VIEWS
CONSTRUCTION



INFO LINE : +393311236669

INFO@LYNXTECHNOLOGIES.IT